

cavalier  
homes®  
REAL HOMES... REAL PEOPLE.



# Santa Barbara Series

[www.cavalierhomes.com.au](http://www.cavalierhomes.com.au)



# Award winning buildings and designs to suit you.



## SANTA BARBARA 20

 | 3
  | 2
  | 2

3 Bedrooms

2 Bathrooms

Double Garage

Lounge

Meals/Family

Kitchen

Laundry

Living 141.49m<sup>2</sup>

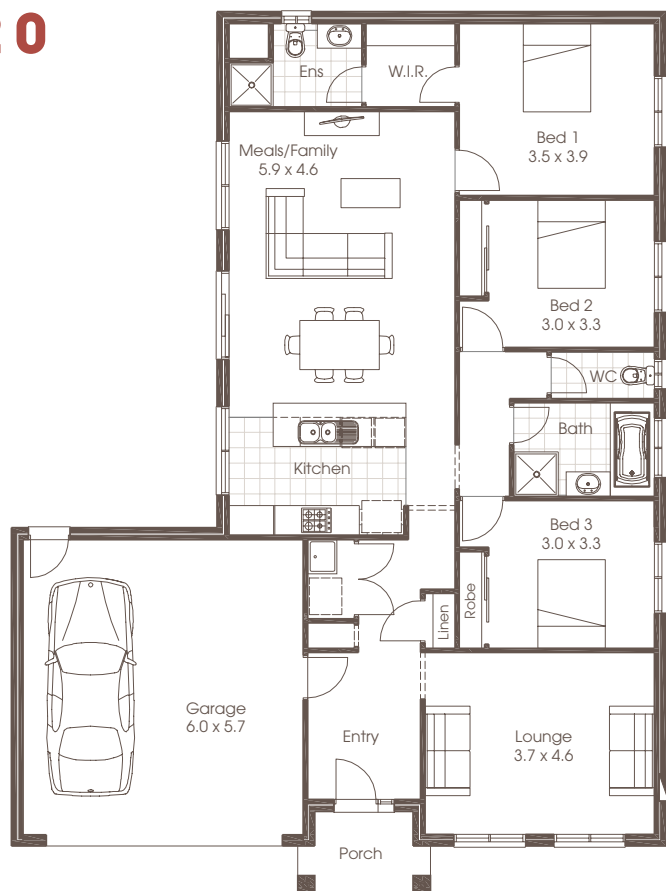
Garage 38.24m<sup>2</sup>

Porch 3.98m<sup>2</sup>

Total 183.71m<sup>2</sup>

Width 13.26m

Depth 17.93m



Room sizes shown are approximate only, please refer to final working drawings for actual sizes. Each office is independently owned and operated. Plans are protected by copyright. Prices, inclusions and plans are subject to variation without notice. Display/show home designs and inclusions vary throughout Australia and New Zealand and are provided as a guide only. Please refer to your building contract for the specific design and inclusion details of your new home. Images provided may not be specific to that house type, they are for illustrative purposes only.



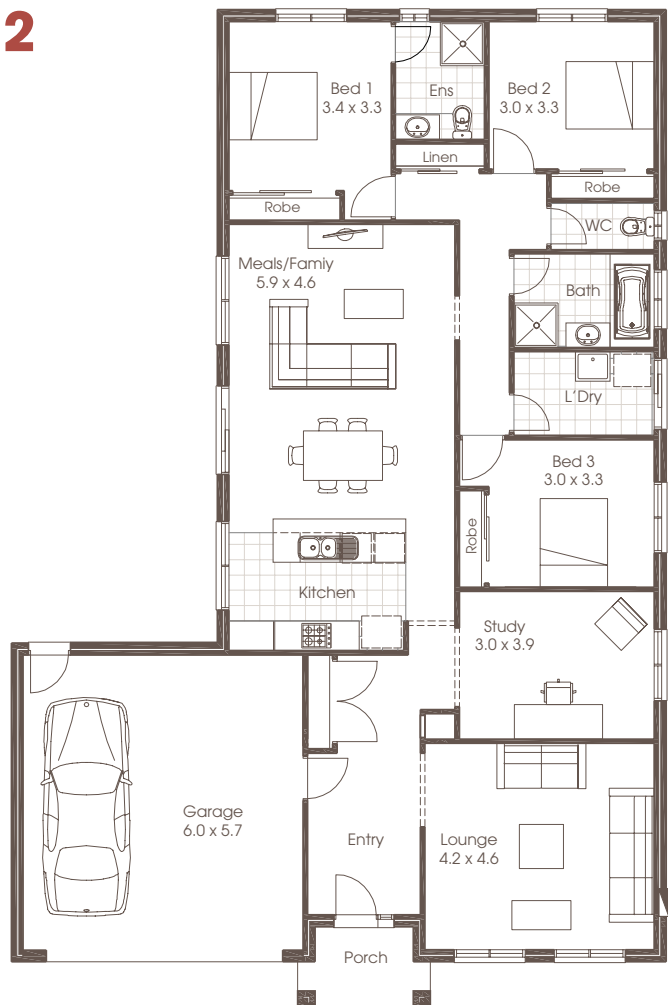
# SANTA BARBARA 22

 | 3
  | 2
  | 2

- 3 Bedrooms
- 2 Bathrooms
- Double Garage
- Study
- Lounge
- Meals/Family
- Kitchen
- Laundry

Living	163.17m <sup>2</sup>
Garage	38.24m <sup>2</sup>
Porch	3.98m <sup>2</sup>
<b>Total</b>	<b>205.39m<sup>2</sup></b>

Width	13.26m
Depth	20.32m





# SANTA BARBARA 25

 | 3
  | 2
  | 2

3 Bedrooms

2 Bathrooms

Double Garage

Study

Lounge

Family

Meals

Kitchen

Laundry

Outdoor Living

Living 178.68m<sup>2</sup>

Garage 38.94m<sup>2</sup>

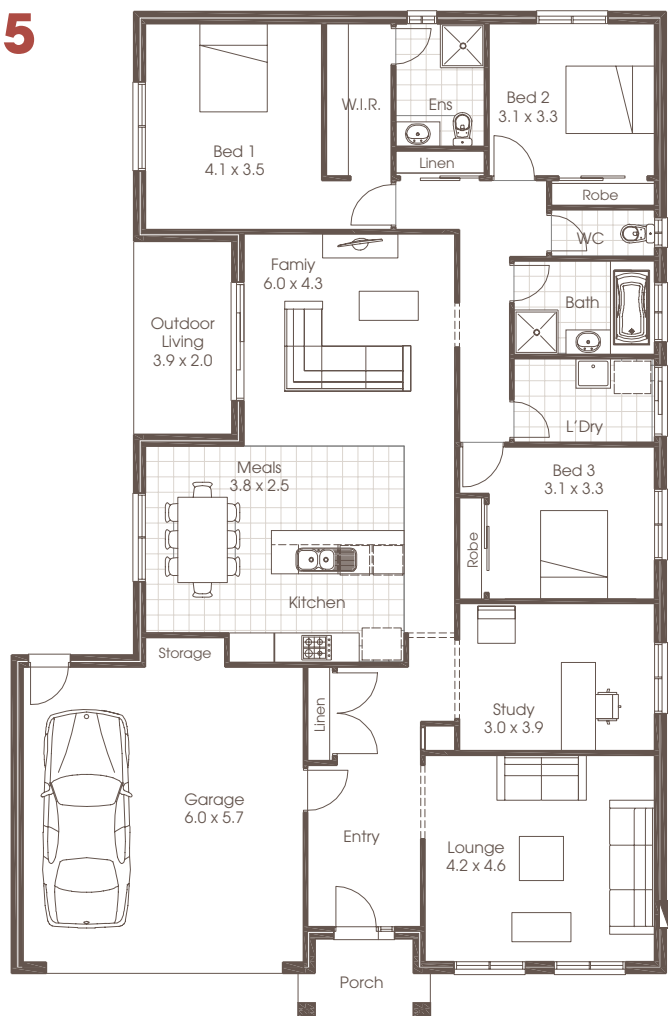
Porch 3.98m<sup>2</sup>

Outdoor Living 7.86m<sup>2</sup>

Total 229.46m<sup>2</sup>

Width 13.26m

Depth 20.52m





## SANTA BARBARA 26

 | 4
  | 2
  | 2

4 Bedrooms

2 Bathrooms

Double Garage

Lounge

Family

Meals

Kitchen

Laundry

Outdoor Living

Living 177.98m<sup>2</sup>

Garage 40.86m<sup>2</sup>

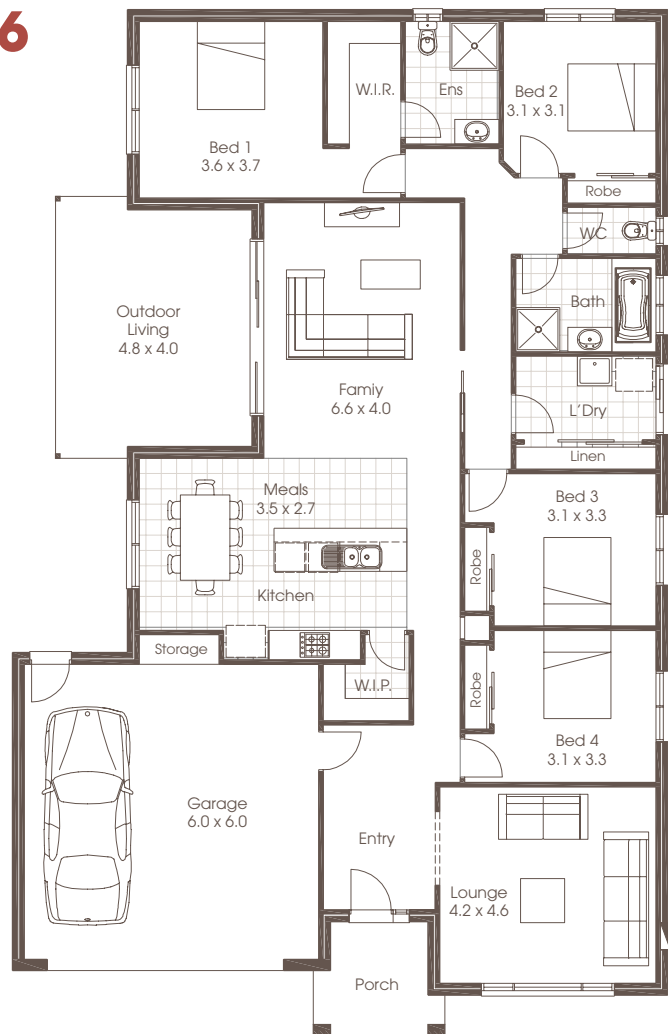
Porch 5.69m<sup>2</sup>

Outdoor Living 20.03m<sup>2</sup>

Total 244.56m<sup>2</sup>

Width 13.35m

Depth 21.02m





## FACADE OPTIONS

The Santa Barbara combines great value and spacious design. The living experience will be fulfilling and memorable. Relax with friends in the stylish formal lounge area, enjoy the open plan living at the rear. The study option will give you the versatility you've been craving. With something for everyone, Santa Barbara is sure to impress.



Standard

Plans are copyright. Prices, inclusions and plans are subject to variation without notice and vary throughout Australasia. Display and show home designs and inclusions vary throughout Australasia and are provided as a guide only. Please refer to your building contract for the specific design and inclusion details of your new home. Unless otherwise stated in writing retail new home prices do not include furniture, decorator items, driveways, paths, landscaping, swimming pools, light fittings, window and floor coverings (except tiles to WCs, bathrooms and laundries), letterboxes, fencing, security, vacuum systems, telephone, intercom and communication systems and air conditioning. Photographs shown in this brochure are indicative only to depict the style of Cavalier designs and may not be of this series design. Width and depth dimensions shown to floor plans are measured to external brick work and do not include eaves. Eaves are not included as standard. Additional costs apply.

Cavalier Homes Registered Builders in Albury-Wodonga CDB-U 48509 (VIC) 184744C (NSW), Bendigo CDB-U 50034, Greater Western Sydney 332118C, Goulburn Valley CDB-U 51879 (VIC) 316535C (NSW), Goldfields CDB-U 58723, Melbourne West CDB-M 49760, North Coast 209455C, Wagga Wagga 196616C.



Premier