

cavalier
homes®
REAL HOMES... REAL PEOPLE.



Eclipse Series

www.cavallierhomes.com.au



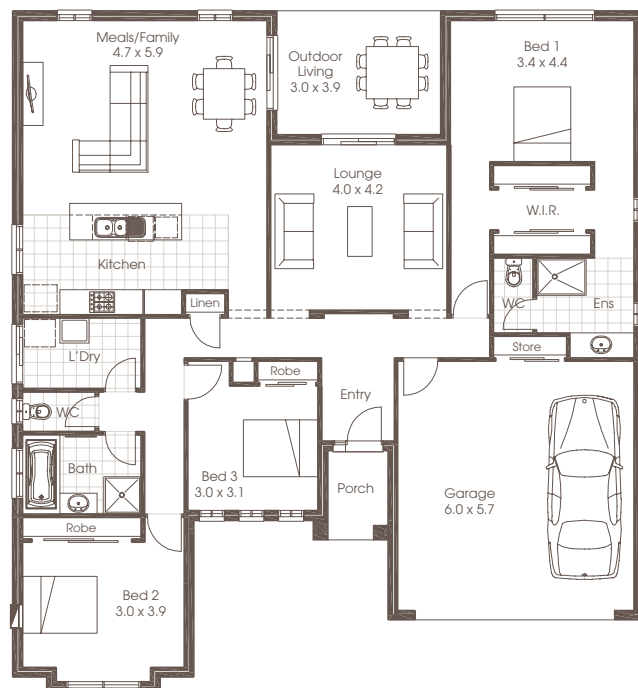
Award winning buildings and designs to suit you.



ECLIPSE 23



3 Bedrooms	Living	167.45m ²
2 Bathrooms	Garage	38.10m ²
Double Garage	Front Porch	3.20m ²
Lounge	Outdoor Living	11.80m ²
Meals/Family	Total	220.55m ²
Kitchen		
Laundry	Width	15.24m
Outdoor Living	Depth	16.43m

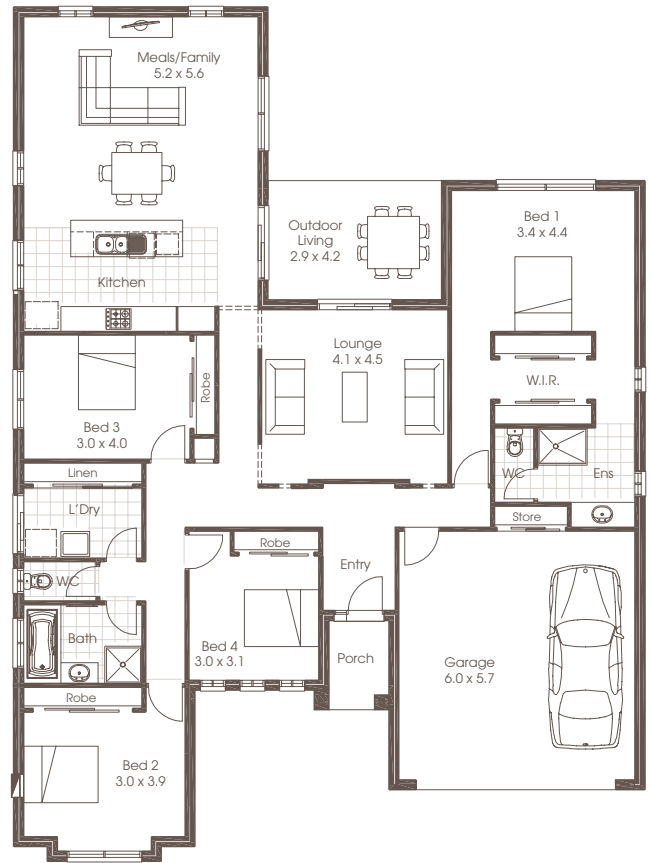


Room sizes shown are approximate only, please refer to final working drawings for actual sizes. Each office is independently owned and operated. Plans are protected by copyright. Prices, inclusions and plans are subject to variation without notice. Display/show home designs and inclusions vary throughout Australia and New Zealand and are provided as a guide only. Please refer to your building contract for the specific design and inclusion details of your new home. Images provided may not be specific to that house type, they are for illustrative purposes only.

ECLIPSE 26



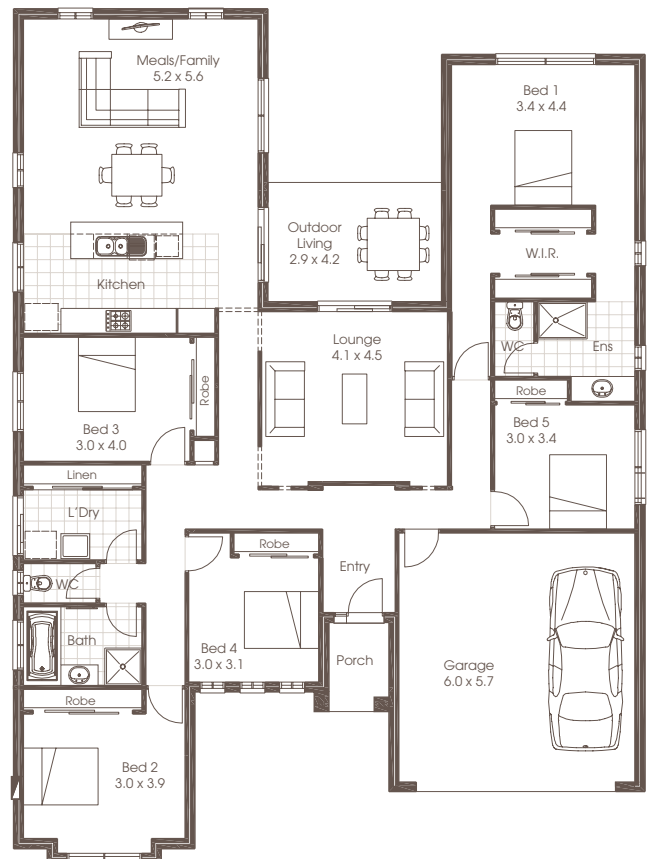
4 Bedrooms	Living	192.90m ²
2 Bathrooms	Garage	38.10m ²
Double Garage	Front Porch	3.20m ²
Lounge	Outdoor Living	12.00m ²
Meals/Family	Total	246.20m ²
Kitchen		
Laundry	Width	15.24m
Outdoor Living	Depth	20.62m



ECLIPSE 28



5 Bedrooms	Living	208.00m ²
2 Bathrooms	Garage	38.10m ²
Double Garage	Front Porch	3.20m ²
Lounge	Outdoor Living	12.00m ²
Meals/Family	Total	261.30m ²
Kitchen		
Laundry	Width	15.24m
Outdoor Living	Depth	20.62m





FACADE OPTIONS

You will instantly notice the beautiful lines and contours of the Eclipse. The designer kitchen allows you the versatility to entertain even the most boisterous crowds, or to cater more intimate occasions if the mood takes you. With a refreshing undercover outdoor living area that's designed with privacy in mind, you can sit and chat or simply unwind. With the master suite nestled away from the main entertaining areas, you will feel like you have been taken away to a five-star resort.



Standard



Premier

Plans are copyright. Prices, inclusions and plans are subject to variation without notice and vary throughout Australasia. Display and show home designs and inclusions vary throughout Australasia and are provided as a guide only. Please refer to your building contract for the specific design and inclusion details of your new home. Unless otherwise stated in writing retail new home prices do not include furniture, decorator items, driveways, paths, landscaping, swimming pools, light fittings, window and floor coverings (except tiles to WCs, bathrooms and laundries), letterboxes, fencing, security, vacuum systems, telephone, intercom and communication systems and air conditioning. Photographs shown in this brochure are indicative only to depict the style of Cavalier designs and may not be of this series design. Width and depth dimensions shown to floor plans are measured to external brick work and do not include eaves. Eaves are not included as standard. Additional costs apply.

Cavalier Homes Registered Builders in Albury-Wodonga CDB-U 48509 (VIC) 184744C (NSW), Bendigo CDB-U 50034, Greater Western Sydney 332118C, Goulburn Valley CDB-U 51879 (VIC) 316535C (NSW), Goldfields CDB-U 58723, Melbourne West CDB-M 49760, North Coast 209455C, Wagga Wagga 196616C.