

cavalier  
homes®  
REAL HOMES... REAL PEOPLE.



# Cambridge Series

[www.cavalierhomes.com.au](http://www.cavalierhomes.com.au)





Award winning buildings and designs to suit you.

## CAMBRIDGE 22

 | 3
  | 2
  | 2

3 Bedrooms

2 Bathrooms

Double Garage

Study

Meals/Lounge

Family

Kitchen

Laundry

Living 158.88m<sup>2</sup>

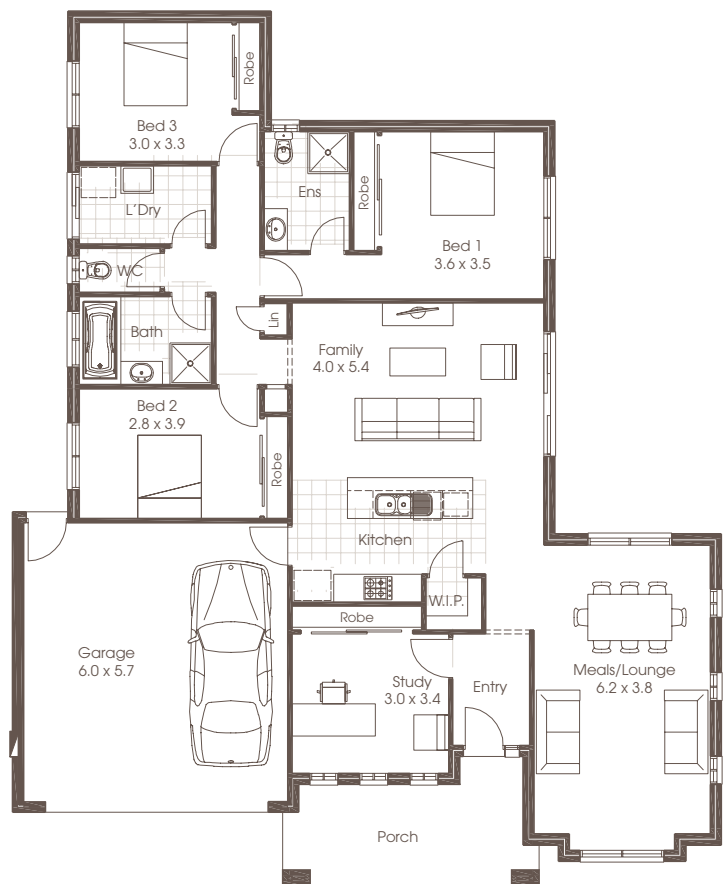
Garage 37.61m<sup>2</sup>

Porch 12.31m<sup>2</sup>

Total 208.80m<sup>2</sup>

Width 15.29m

Depth 18.87m



Room sizes shown are approximate only, please refer to final working drawings for actual sizes. Each office is independently owned and operated. Plans are protected by copyright. Prices, inclusions and plans are subject to variation without notice. Display/show home designs and inclusions vary throughout Australia and New Zealand and are provided as a guide only. Please refer to your building contract for the specific design and inclusion details of your new home. Images provided may not be specific to that house type, they are for illustrative purposes only.



# CAMBRIDGE 24

 | 3
  | 2
  | 2

3 Bedrooms

2 Bathrooms

Double Garage

Study

Lounge

Family

Meals

Kitchen

Laundry

Living 178.06m<sup>2</sup>

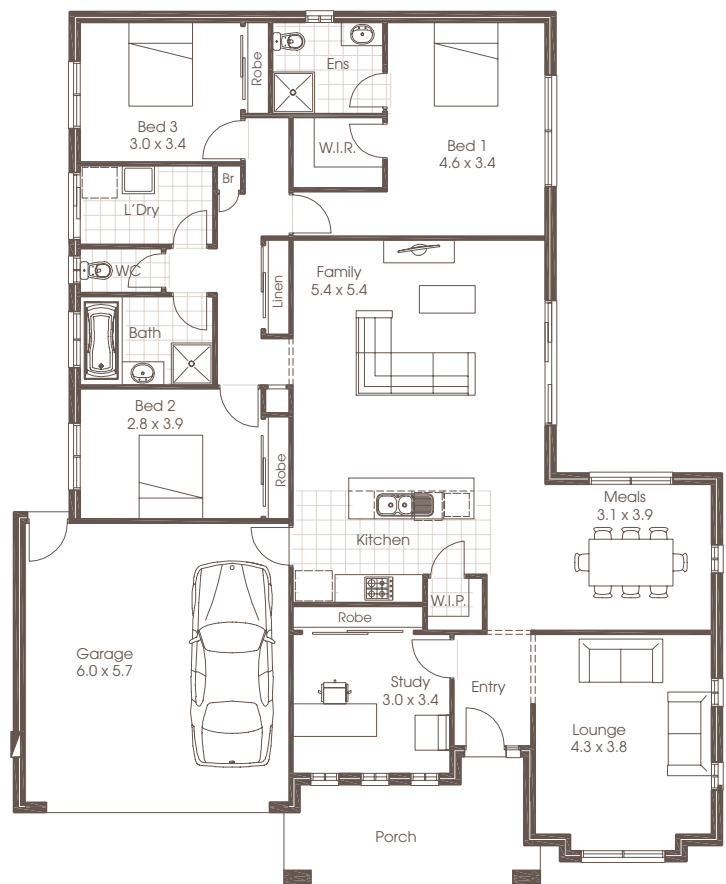
Garage 37.61m<sup>2</sup>

Front Porch 12.31m<sup>2</sup>

Total 227.98m<sup>2</sup>

Width 15.29m

Depth 18.87m





## CAMBRIDGE 26

 | 3
  | 2
  | 2

3 Bedrooms

2 Bathrooms

Double Garage

Study

Lounge

Family

Meals

Kitchen

Laundry

Living 196.20m<sup>2</sup>

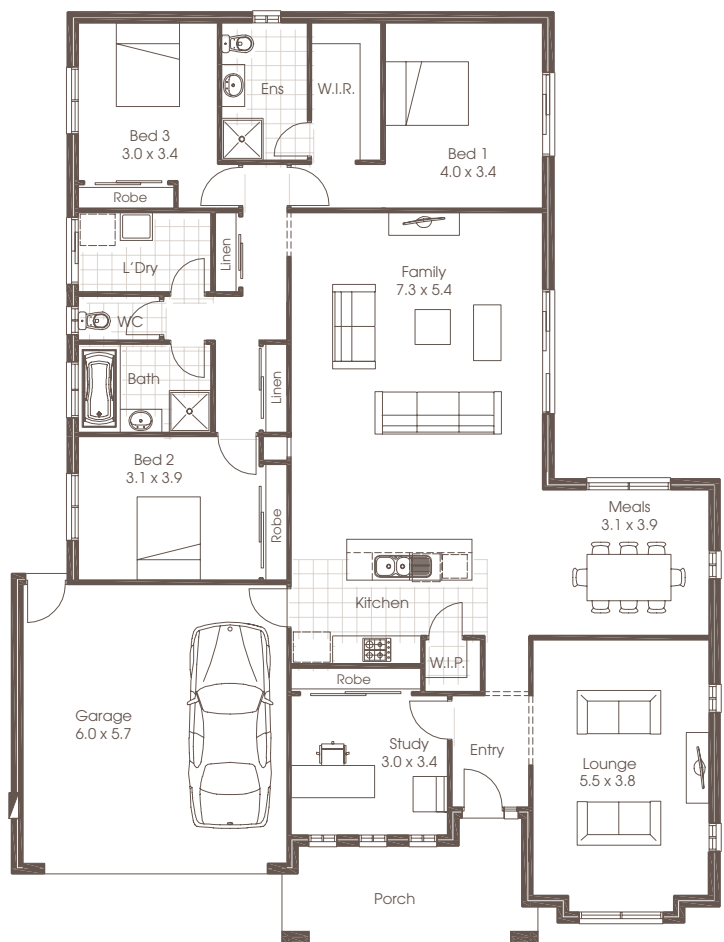
Garage 37.61m<sup>2</sup>

Front Porch 12.31m<sup>2</sup>

Total 246.12m<sup>2</sup>

Width 15.29m

Depth 20.19m





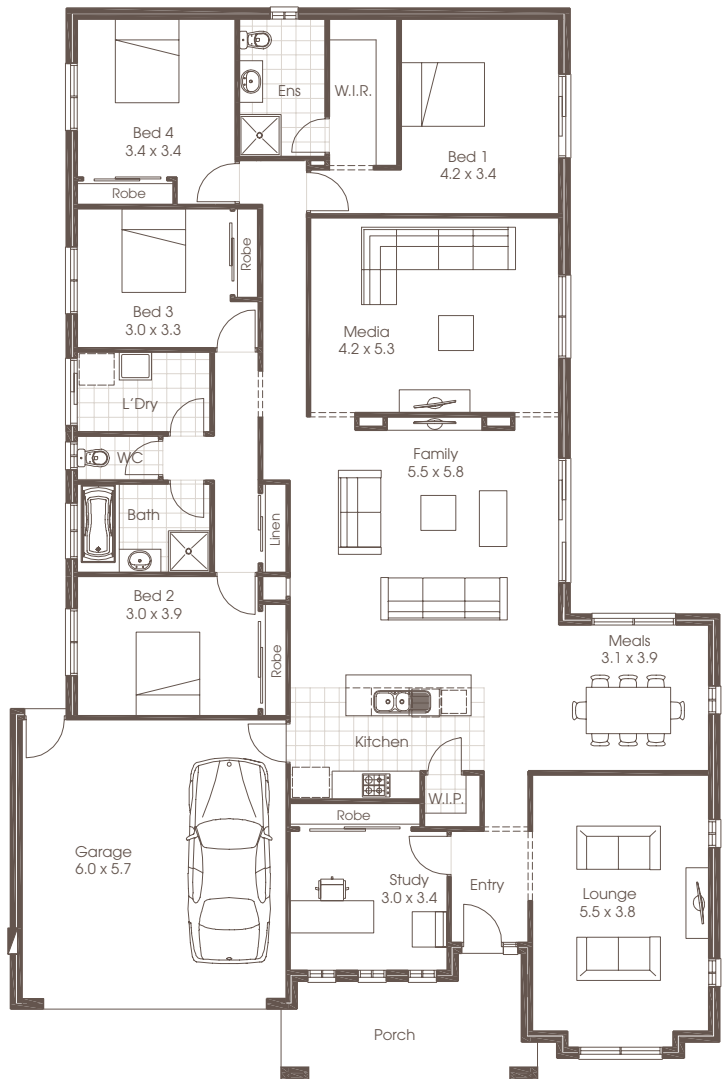
# CAMBRIDGE 30

 | 4
  | 2
  | 2

- \_\_\_\_\_
- 4 Bedrooms
- \_\_\_\_\_
- 2 Bathrooms
- \_\_\_\_\_
- Double Garage
- \_\_\_\_\_
- Study
- \_\_\_\_\_
- Lounge
- \_\_\_\_\_
- Retreat
- \_\_\_\_\_
- Family
- \_\_\_\_\_
- Meals
- \_\_\_\_\_
- Kitchen
- \_\_\_\_\_
- Laundry

Living	232.40m <sup>2</sup>
Garage	37.61m <sup>2</sup>
Front Porch	12.31m <sup>2</sup>
Total	282.32m <sup>2</sup>

Width	15.29m
Depth	23.19m





Designed with the modern family in mind, the Cambridge is the perfect mix of street appeal and liveability. At the heart of this appealing home is large formal and informal open plan areas that is just about everything to everyone. This classy design is extremely functional while still being elegant and luxurious.

## FACADE OPTIONS



Standard

Plans are copyright. Prices, inclusions and plans are subject to variation without notice and vary throughout Australasia. Display and show home designs and inclusions vary throughout Australasia and are provided as a guide only. Please refer to your building contract for the specific design and inclusion details of your new home. Unless otherwise stated in writing retail new home prices do not include furniture, decorator items, driveways, paths, landscaping, swimming pools, light fittings, window and floor coverings (except tiles to WCs, bathrooms and laundries), letterboxes, fencing, security, vacuum systems, telephone, intercom and communication systems and air conditioning. Photographs shown in this brochure are indicative only to depict the style of Cavalier designs and may not be of this series design. Width and depth dimensions shown to floor plans are measured to external brick work and do not include eaves. Eaves are not included as standard. Additional costs apply.



Grange

Cavalier Homes Registered Builders in Albury-Wodonga CDB-U 48509 (VIC) 184744C (NSW), Bendigo CDB-U 50034, Greater Western Sydney 332118C, Goulburn Valley CDB-U 51879 (VIC) 316535C (NSW), Goldfields CDB-U 58723, Melbourne West CDB-M 49760, North Coast 209455C, Wagga Wagga 196616C.