

cavalier
homes®
REAL HOMES... REAL PEOPLE.



Bayview Series

www.cavalierhomes.com.au

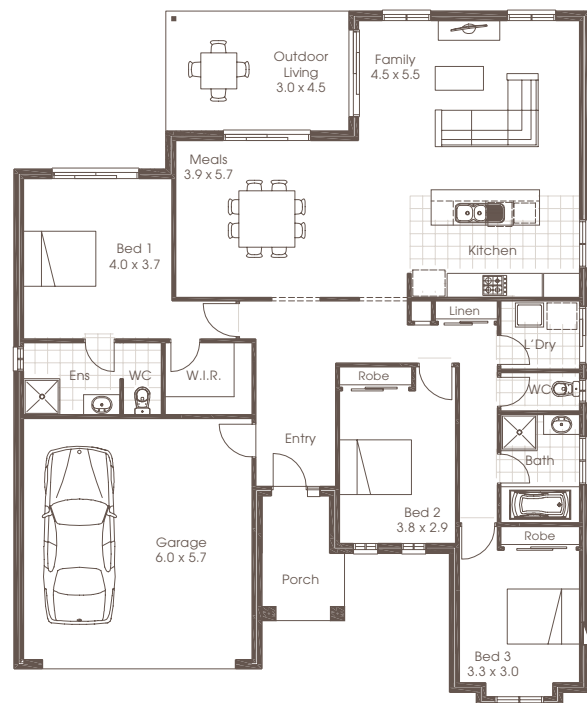




BAYVIEW 23



3 Bedrooms	Living	155.33m ²
2 Bathrooms	Garage	38.15m ²
Double Garage	Porch	5.87m ²
Family	Outdoor Living	13.60m ²
Meals	Total	212.95m ²
Kitchen		
Laundry	Width	14.34m
Outdoor Living	Depth	17.34m

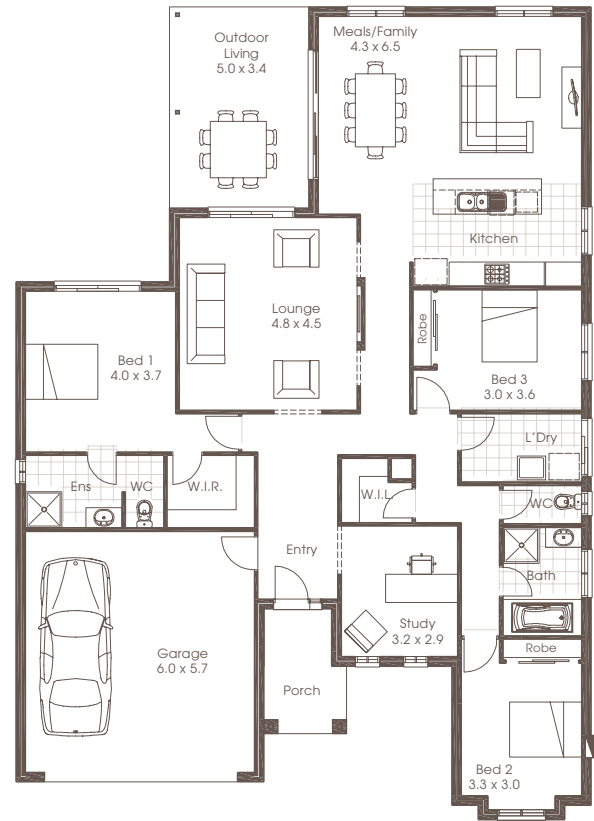


Room sizes shown are approximate only, please refer to final working drawings for actual sizes. Each office is independently owned and operated. Plans are protected by copyright. Prices, inclusions and plans are subject to variation without notice. Display/show home designs and inclusions vary throughout Australia and New Zealand and are provided as a guide only. Please refer to your building contract for the specific design and inclusion details of your new home. Images provided may not be specific to that house type, they are for illustrative purposes only.

BAYVIEW 26



3 Bedrooms	Living	182.0m ²
2 Bathrooms	Garage	38.15m ²
Double Garage	Porch	5.87m ²
Study	Outdoor Living	17.38m ²
Lounge	Total	243.40m ²
Meals/Family		
Kitchen	Width	14.34m
Laundry	Depth	20.25m
Outdoor Living		



BAYVIEW 30



4 Bedrooms	Living	225.06m ²
2 Bathrooms	Garage	38.15m ²
Double Garage	Porch	5.87m ²
Media	Outdoor Living	16.97m ²
Study	Total	286.12m ²
Lounge		
Meals/Family	Width	14.34m
Kitchen	Depth	25.14m
Laundry		
Outdoor Living		





FACADE OPTIONS

Room to move. This is what the Bayview offers. A departure from the 'all too common' squeeze, typical of today's construction attitudes. You will love how the Bayview's formal entry foyer flows to the open plan living, galley style kitchen and dining area. Relish the comfortable master bedroom suite with walk-in robes and ensuite.



Standard



Executive

Plans are copyright. Prices, inclusions and plans are subject to variation without notice and vary throughout Australasia. Display and show home designs and inclusions vary throughout Australasia and are provided as a guide only. Please refer to your building contract for the specific design and inclusion details of your new home. Unless otherwise stated in writing retail new home prices do not include furniture, decorator items, driveways, paths, landscaping, swimming pools, light fittings, window and floor coverings (except tiles to WCs, bathrooms and laundries), letterboxes, fencing, security, vacuum systems, telephone, intercom and communication systems and air conditioning. Photographs shown in this brochure are indicative only to depict the style of Cavalier designs and may not be of this series design. Width and depth dimensions shown to floor plans are measured to external brick work and do not include eaves. Eaves are not included as standard. Additional costs apply.

Cavalier Homes Registered Builders in Albury-Wodonga CDB-U 48509 (VIC) 184744C (NSW), Bendigo CDB-U 50034, Greater Western Sydney 332118C, Goulburn Valley CDB-U 51879 (VIC) 316535C (NSW), Goldfields CDB-U 58723, Melbourne West CDB-M 49760, North Coast 209455C, Wagga Wagga 196616C.