

cavalier
homes®
REAL HOMES... REAL PEOPLE.



Ashfield Series

www.cavallierhomes.com.au

Award winning buildings and designs to suit you.



ASHFIELD 24

 | 3
  | 2
  | 2

| | | |
|----------------|----------------|----------------------|
| 3 Bedrooms | Living | 170.36m ² |
| 2 Bathrooms | Garage | 40.28m ² |
| Double Garage | Porch | 6.32m ² |
| Study Nook | Outdoor Living | 13.24m ² |
| Retreat | Total | 230.20m ² |
| Family | | |
| Meals | Width | 13.06m |
| Kitchen | Depth | 20.54m |
| Laundry | | |
| Outdoor Living | | |

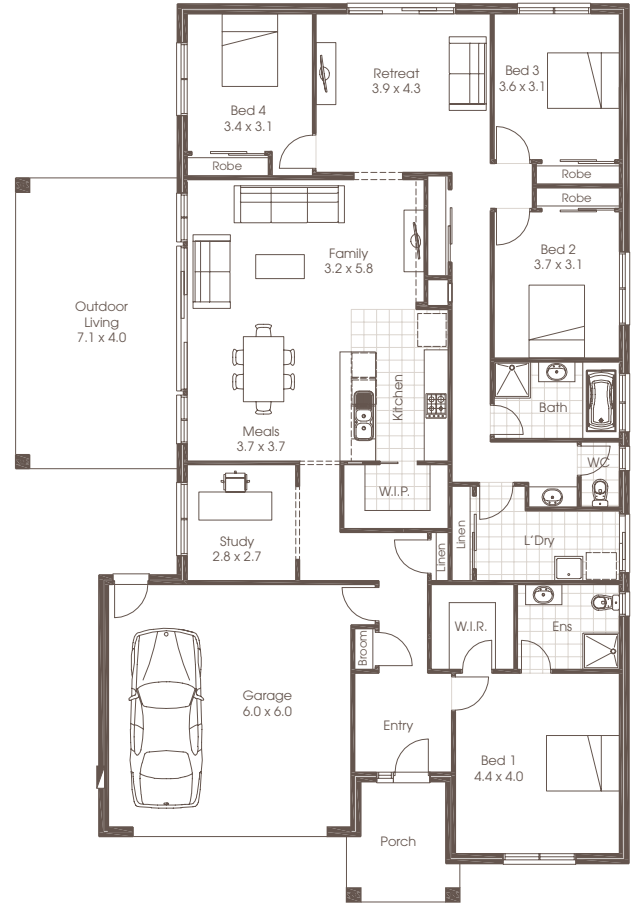


Room sizes shown are approximate only, please refer to final working drawings for actual sizes. Each office is independently owned and operated. Plans are protected by copyright. Prices, inclusions and plans are subject to variation without notice. Display/show home designs and inclusions vary throughout Australia and New Zealand and are provided as a guide only. Please refer to your building contract for the specific design and inclusion details of your new home. Images provided may not be specific to that house type, they are for illustrative purposes only.

ASHFIELD 30



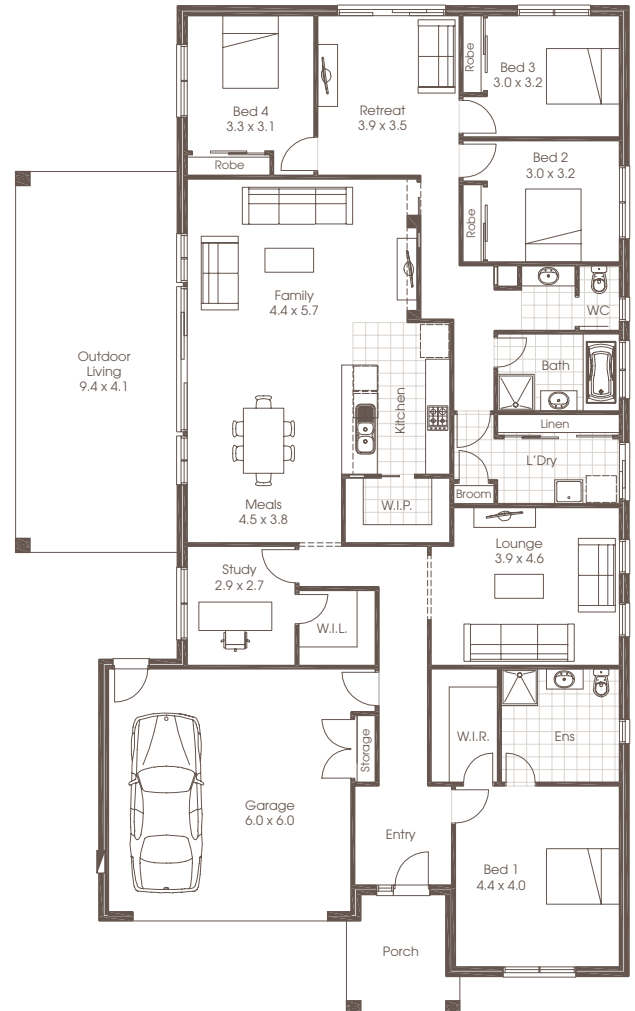
| | | |
|----------------|----------------|----------------------|
| 4 Bedrooms | Living | 202.36m ² |
| 2 Bathrooms | Garage | 40.30m ² |
| Double Garage | Porch | 7.13m ² |
| Study | Outdoor Living | 28.76m ² |
| Retreat | Total | 278.55m ² |
| Family | | |
| Meals | Width | 15.17m |
| Kitchen | Depth | 22.20m |
| Laundry | | |
| Outdoor Living | | |



ASHFIELD 34



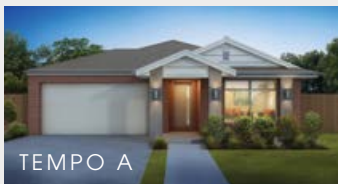
| | | |
|----------------|----------------|----------------------|
| 4 Bedrooms | Living | 229.96m ² |
| 2 Bathrooms | Garage | 40.13m ² |
| Double Garage | Front Porch | 7.38m ² |
| Study | Outdoor Living | 37.68m ² |
| Lounge | Total | 315.15m ² |
| Retreat | | |
| Family | Width | 15.17m |
| Meals | Depth | 24.94m |
| Kitchen | | |
| Laundry | | |
| Outdoor Living | | |



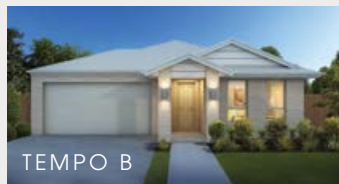


Treat yourself in the Ashfield - it gives you the opportunity to feel what space really means. Designed with entertaining in mind, the Ashfield offers three or four bedrooms and a varied choice of living space plus an urban alfresco area made for you to keep the company of family and friends. Linked to the kitchen and meals area it gives you seamless transition between inside and out. The Ashfield embraces a modern open plan layout with the core living areas at the rear of the house. Coupled with the option of 3 or 4 bedrooms, it also has the flexibility, design and style to suit every budget.

FACADE OPTIONS



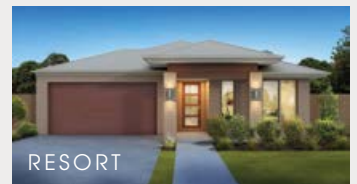
TEMPO A



TEMPO B



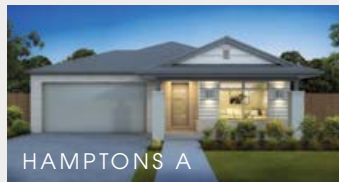
TEMPO C



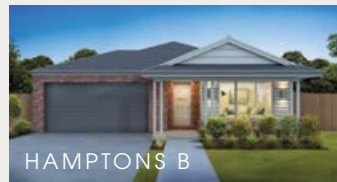
RESORT



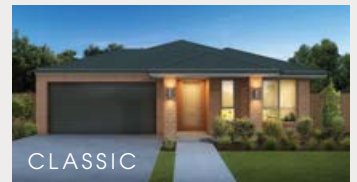
MODERN



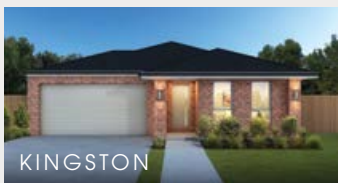
HAMPTONS A



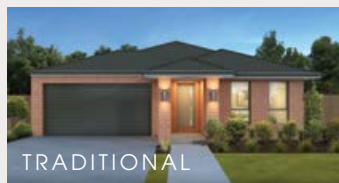
HAMPTONS B



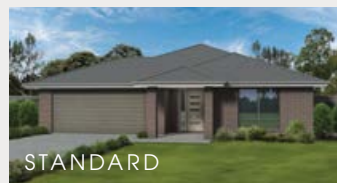
CLASSIC



KINGSTON



TRADITIONAL



STANDARD

Plans are copyright. Prices, inclusions and plans are subject to variation without notice and vary throughout Australasia. Display and show home designs and inclusions vary throughout Australasia and are provided as a guide only. Please refer to your building contract for the specific design and inclusion details of your new home. Unless otherwise stated in writing retail new home prices do not include furniture, decorator items, driveways, paths, landscaping, swimming pools, light fittings, window and floor coverings (except tiles to WCs, bathrooms and laundries), letterboxes, fencing, security, vacuum systems, telephone, intercom and communication systems and air conditioning. Photographs shown in this brochure are indicative only to depict the style of Cavalier designs and may not be of this series design. Width and depth dimensions shown to floor plans are measured to external brick work and do not include eaves. Eaves are not included as standard. Additional costs apply.

Cavalier Homes Registered Builders in Albury-Wodonga CDB-U 48509 (VIC) 184744C (NSW), Bendigo CDB-U 50034, Greater Western Sydney 332118C, Goulburn Valley CDB-U 51879 (VIC) 316535C (NSW), Goldfields CDB-U 58723, Melbourne West CDB-M 49760, North Coast 209455C, Wagga Wagga 196616C.