

cavalier  
homes<sup>®</sup>  
REAL HOMES... REAL PEOPLE.



# Palmerston Series

[www.cavallerhomes.com.au](http://www.cavallerhomes.com.au)





# Award winning buildings and designs to suit you.



## PALMERSTON 28



4 Bedrooms

2 Bathrooms

Double Garage

Meals/Family

Kitchen

Laundry

Outdoor Living

Living 194.85m<sup>2</sup>

Garage 39.87m<sup>2</sup>

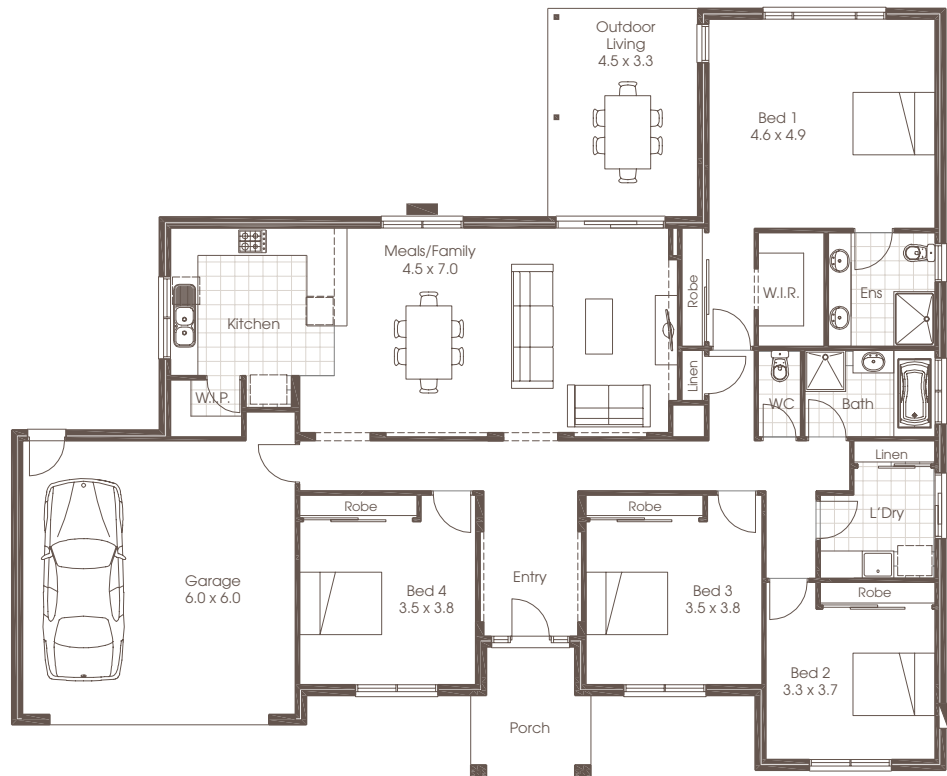
Porch 7.01m<sup>2</sup>

Outdoor Living 15.14m<sup>2</sup>

Total 256.87m<sup>2</sup>

Width 20.53m

Depth 16.98m



Room sizes shown are approximate only, please refer to final working drawings for actual sizes. Each office is independently owned and operated. Plans are protected by copyright. Prices, inclusions and plans are subject to variation without notice. Display/show home designs and inclusions vary throughout Australia and New Zealand and are provided as a guide only. Please refer to your building contract for the specific design and inclusion details of your new home. Images provided may not be specific to that house type, they are for illustrative purposes only.



## PALMERSTON 35



4 Bedrooms

2 Bathrooms

Double Garage

Study

Lounge

Family

Meals

Kitchen

Laundry

Outdoor Living

Living 251.90m<sup>2</sup>

Garage 40.54m<sup>2</sup>

Porch 7.01m<sup>2</sup>

Outdoor Living 24.12m<sup>2</sup>

Total 323.57m<sup>2</sup>

Width 23.39m

Depth 16.98m







## FACADE OPTIONS

The Palmerston is designed for the modern family, with four bedrooms and an optional study that gives you all personal space while at the same time letting you bring your family together. Large open plan living, huge covered outdoor living area and formal entry all add up to a package that is really hard to go past. The kitchen, dining, family and rumpus are specifically designed around the outdoor entertaining area to give you that functionality and flow of today's modern lifestyle. This home hones in on the needs of rural life while letting you explore all of the trappings of modern life.



Standard



Executive

Plans are copyright. Prices, inclusions and plans are subject to variation without notice and vary throughout Australasia. Display and show home designs and inclusions vary throughout Australasia and are provided as a guide only. Please refer to your building contract for the specific design and inclusion details of your new home. Unless otherwise stated in writing retail new home prices do not include furniture, decorator items, driveways, paths, landscaping, swimming pools, light fittings, window and floor coverings (except tiles to WCs, bathrooms and laundries), letterboxes, fencing, security, vacuum systems, telephone, intercom and communication systems and air conditioning. Photographs shown in this brochure are indicative only to depict the style of Cavalier designs and may not be of this series design. Width and depth dimensions shown to floor plans are measured to external brick work and do not include eaves. Eaves are not included as standard. Additional costs apply.

Cavalier Homes Registered Builders in Albury-Wodonga CDB-U 48509 (VIC) 184744C (NSW), Bendigo CDB-U 50034, Greater Western Sydney 332118C, Goulburn Valley CDB-U 51879 (VIC) 316535C (NSW), Goldfields CDB-U 58723, Melbourne West CDB-M 49760, North Coast 209455C, Wagga Wagga 196616C.