

cavalier
homes®
REAL HOMES... REAL PEOPLE.



Bondi Series

www.cavalierhomes.com.au

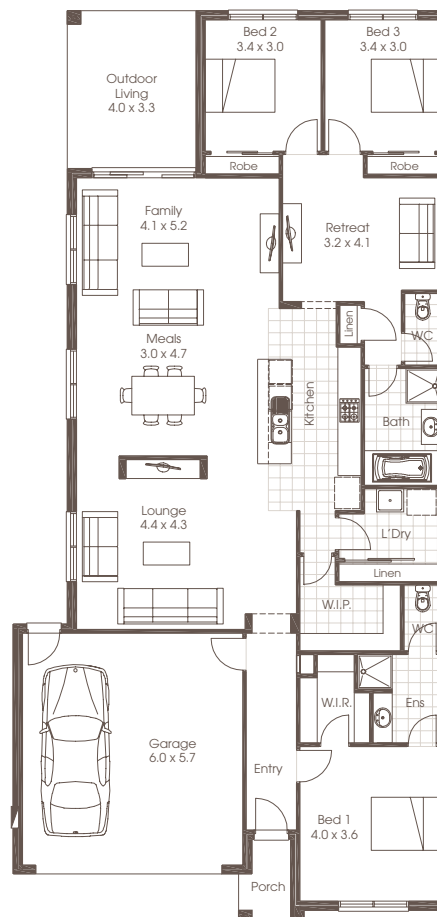


Award winning buildings and designs to suit you.

BONDI 25

 | 3
  | 2
  | 2

3 Bedrooms	Living	181.97m ²
2 Bathrooms	Garage	37.55m ²
Double Garage	Front Porch	2.65m ²
Lounge	Outdoor Living	13.58m ²
Retreat	Total	235.76m ²
Family		
Meals	Width	11.30m
Kitchen	Depth	23.61m
Laundry		
Outdoor Living		

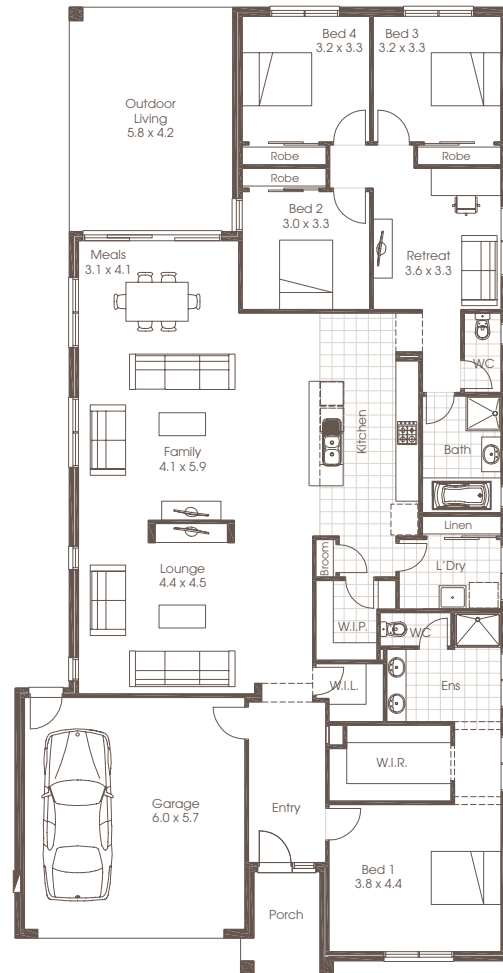


Room sizes shown are approximate only, please refer to final working drawings for actual sizes. Each office is independently owned and operated. Plans are protected by copyright. Prices, inclusions and plans are subject to variation without notice. Display/show home designs and inclusions vary throughout Australia and New Zealand and are provided as a guide only. Please refer to your building contract for the specific design and inclusion details of your new home. Images provided may not be specific to that house type, they are for illustrative purposes only.

BONDI 31



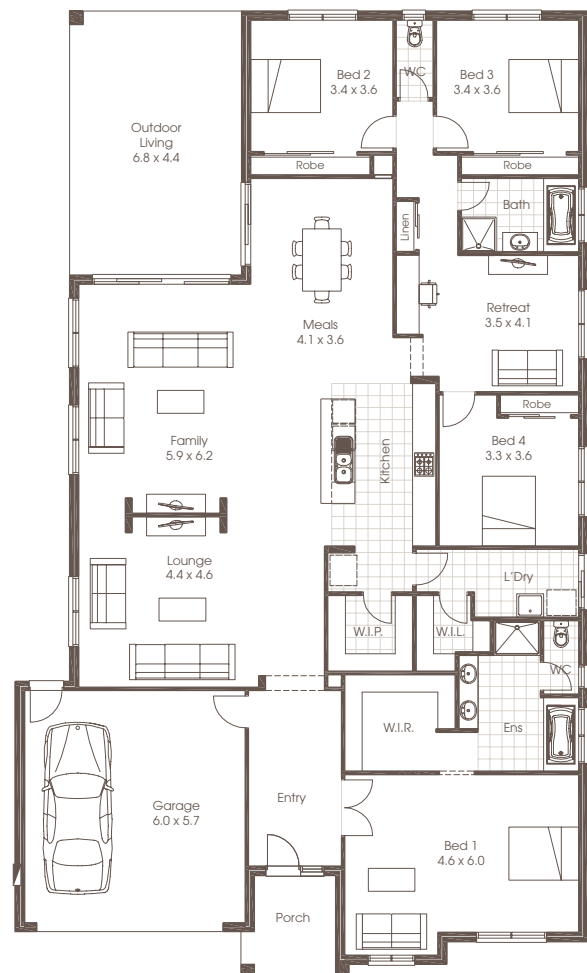
4 Bedrooms	Living	221.22m ²
2 Bathrooms	Garage	37.75m ²
Double Garage	Front Porch	4.84m ²
Lounge	Outdoor Living	24.53m ²
Retreat	Total	288.34m ²
Family		
Meals	Width	12.80m
Kitchen	Depth	25.00m
Laundry		
Outdoor Living		



BONDI 36



4 Bedrooms	Living	260.24m ²
2 Bathrooms	Garage	37.69m ²
Double Garage	Front Porch	6.10m ²
Lounge	Outdoor Living	30.39m ²
Retreat	Total	334.42m ²
Family		
Meals	Width	14.80m
Kitchen	Depth	25.00m
Laundry		
Outdoor Living		





FACADE OPTIONS

Room to move in a stunning design for today's growing family. A simple statement that is incredibly hard to achieve, but here it is. Large open plan living, flowing entertaining areas, secluded kids retreat/study, your choice of 3 or 4 bedrooms and a stunning kitchen design are merely hinting at what the Bondi has to offer. As well as being designed to suit a large range of common lot sizes, the Bondi also gives you a myriad of facade options to suit every style and taste. Class and style for every budget.



Standard



Executive

Plans are copyright. Prices, inclusions and plans are subject to variation without notice and vary throughout Australasia. Display and show home designs and inclusions vary throughout Australasia and are provided as a guide only. Please refer to your building contract for the specific design and inclusion details of your new home. Unless otherwise stated in writing retail new home prices do not include furniture, decorator items, driveways, paths, landscaping, swimming pools, light fittings, window and floor coverings (except tiles to WCs, bathrooms and laundries), letterboxes, fencing, security, vacuum systems, telephone, intercom and communication systems and air conditioning. Photographs shown in this brochure are indicative only to depict the style of Cavalier designs and may not be of this series design. Width and depth dimensions shown to floor plans are measured to external brick work and do not include eaves. Eaves are not included as standard. Additional costs apply.

Cavalier Homes Registered Builders in Albury-Wodonga CDB-U 48509 (VIC) 184744C (NSW), Bendigo CDB-U 50034, Greater Western Sydney 332118C, Goulburn Valley CDB-U 51879 (VIC) 316535C (NSW), Goldfields CDB-U 58723, Melbourne West CDB-M 49760, North Coast 209455C, Wagga Wagga 196616C.