

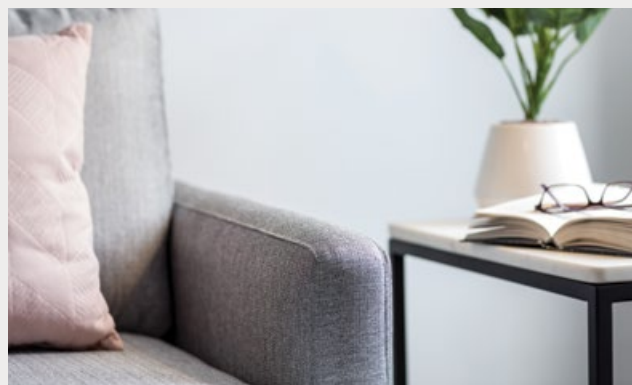
cavalier
homes®
REAL HOMES... REAL PEOPLE.



Winton Series

www.cavalierhomes.com.au

Award winning
buildings
and designs
to suit you.

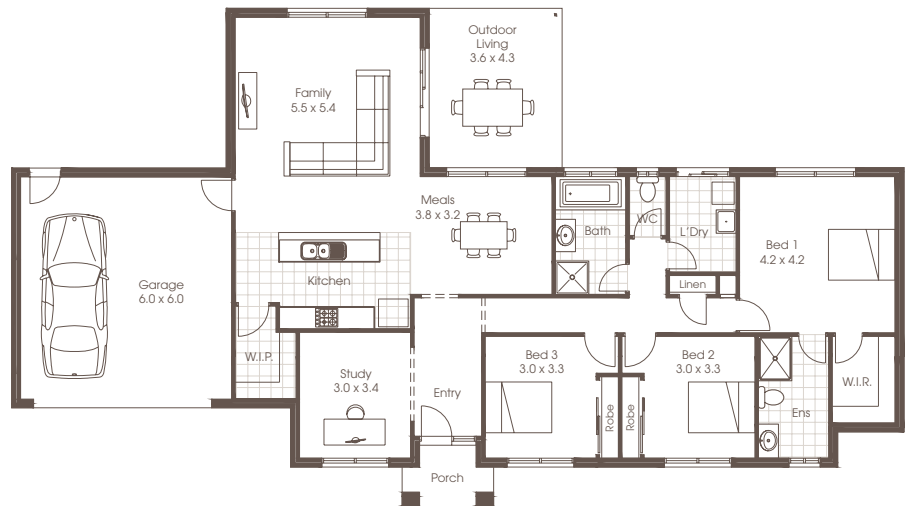




WINTON 24



3 Bedrooms	Living	165.12m ²
2 Bathroom	Garage	40.43m ²
Double Garage	Porch	7.70m ²
Study	Outdoor Living	15.47m ²
Family	Total	228.72m ²
Meals		
Kitchen	Width	24.09m
Laundry	Depth	13.53m
Outdoor Living		



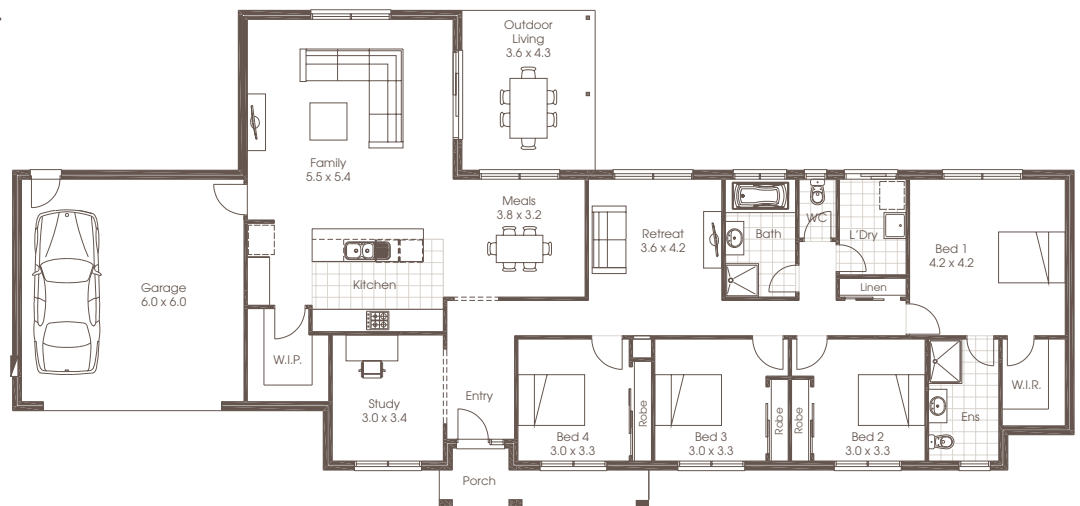
Room sizes shown are approximate only, please refer to final working drawings for actual sizes. Each office is independently owned and operated. Plans are protected by copyright. Prices, inclusions and plans are subject to variation without notice. Display/show home designs and inclusions vary throughout Australia and New Zealand and are provided as a guide only. Please refer to your building contract for the specific design and inclusion details of your new home. Images provided may not be specific to that house type, they are for illustrative purposes only.



WINTON 28

 | 4
  | 2
  | 2

4 Bedrooms	Living	200.87m ²
2 Bathroom	Garage	40.43m ²
Double Garage	Porch	7.40m ²
Study	Outdoor Living	15.47m ²
Retreat	Total	263.33m ²
Family		
Meals	Width	28.63m
Kitchen	Depth	13.66m
Laundry		
Outdoor Living		

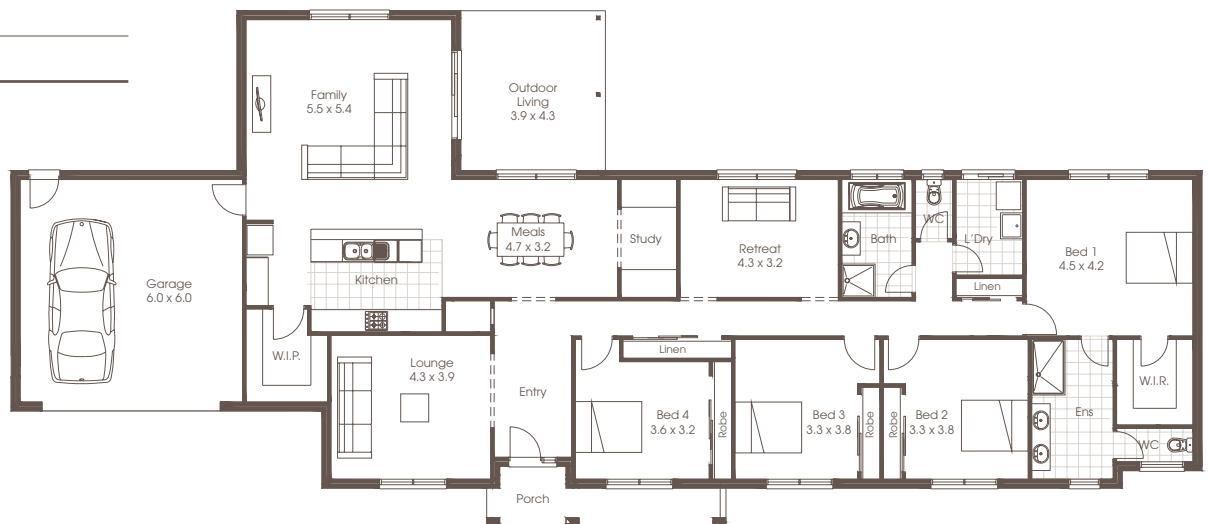




WINTON 32

 | 4
  | 2
  | 2

4 Bedrooms	Living	240.24m ²
2 Bathroom	Garage	41.01m ²
Double Garage	Porch	8.47m ²
Study	Outdoor Living	16.80m ²
Retreat	Total	306.52m ²
Lounge		
Family	Width	32.10m
Meals	Depth	14.02m
Kitchen		
Laundry		
Outdoor Living		





FACADE OPTIONS

The Winton is designed for the modern family, with three or four bedrooms and a study that gives you all personal space while at the same time letting you bring your family together. Large open plan living, a covered outdoor living area and formal entry all add up to a package that is really hard to go past. The kitchen, meals and family are specifically designed around the outdoor entertaining area to give you that functionality and flow of today's modern lifestyle. This home hones in on the needs of rural life while letting you explore all of the trappings of modern life.



Standard



Woodland

Plans are copyright. Prices, inclusions and plans are subject to variation without notice and vary throughout Australasia. Display and show home designs and inclusions vary throughout Australasia and are provided as a guide only. Please refer to your building contract for the specific design and inclusion details of your new home. Unless otherwise stated in writing retail new home prices do not include furniture, decorator items, driveways, paths, landscaping, swimming pools, light fittings, window and floor coverings (except tiles to WCs, bathrooms and laundries), letterboxes, fencing, security, vacuum systems, telephone, intercom and communication systems and air conditioning. Photographs shown in this brochure are indicative only to depict the style of Cavalier designs and may not be of this series design. Width and depth dimensions shown to floor plans are measured to external brick work and do not include eaves. Eaves are not included as standard. Additional costs apply.

Cavalier Homes Registered Builders in Albury-Wodonga CDB-U 48509 (VIC) 184744C (NSW), Bendigo CDB-U 50034, Greater Western Sydney 332118C, Goulburn Valley CDB-U 51879 (VIC) 316535C (NSW), Goldfields CDB-U 58723, Melbourne West CDB-M 49760, North Coast 209455C, Wagga Wagga 196616C.