

cavalier  
homes®  
REAL HOMES... REAL PEOPLE.



# Sandown Series

[www.cavalierhomes.com.au](http://www.cavalierhomes.com.au)



Award winning  
buildings  
and designs  
to suit you.





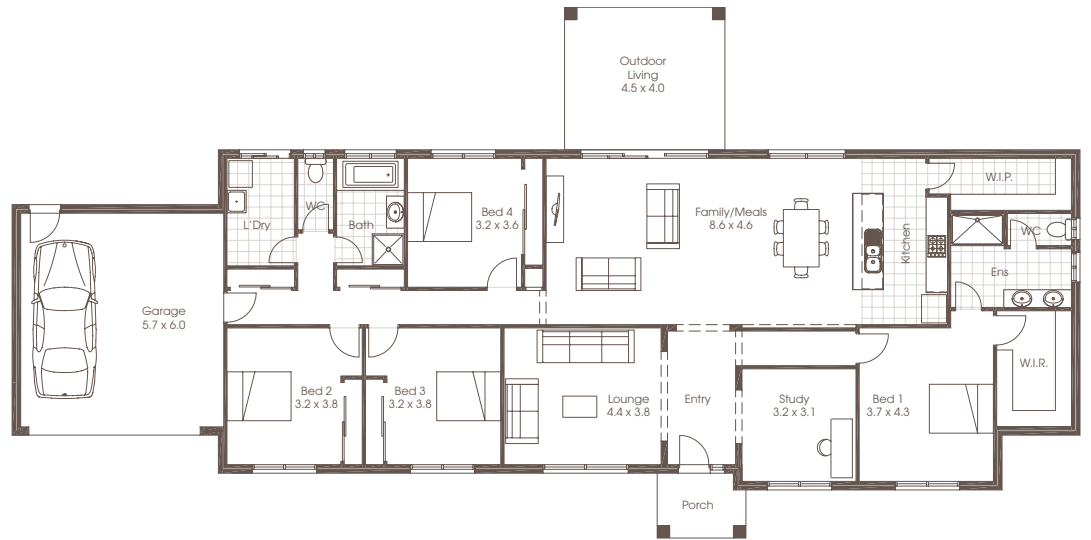
# SANDOWN 28

 | 4
  | 2
  | 2

- 4 Bedrooms
- 2 Bathroom
- Double Garage
- Study
- Lounge
- Family/Meals
- Kitchen
- Laundry
- Outdoor Living

Living	219.91m <sup>2</sup>
Garage	38.40m <sup>2</sup>
Porch	4.37m <sup>2</sup>
Outdoor Living	18.00m <sup>2</sup>
<b>Total</b>	<b>280.68m<sup>2</sup></b>

Width	29.98m
Depth	14.90m



Room sizes shown are approximate only, please refer to final working drawings for actual sizes. Each office is independently owned and operated. Plans are protected by copyright. Prices, inclusions and plans are subject to variation without notice. Display/show home designs and inclusions vary throughout Australia and New Zealand and are provided as a guide only. Please refer to your building contract for the specific design and inclusion details of your new home. Images provided may not be specific to that house type, they are for illustrative purposes only.





## FACADE OPTIONS

The Sandown is perfect for modern country living or that large corner block. The master suite is zoned away from the children's bedrooms for added privacy, and features an extremely impressive open plan kitchen and living space for that central hub of the family home. This magnificent home allows this impressive entrance giving you a direct view to the rear yard, further enhancing the distinct open plan feel.



Standard

Plans are copyright. Prices, inclusions and plans are subject to variation without notice and vary throughout Australasia. Display and show home designs and inclusions vary throughout Australasia and are provided as a guide only. Please refer to your building contract for the specific design and inclusion details of your new home. Unless otherwise stated in writing retail new home prices do not include furniture, decorator items, driveways, paths, landscaping, swimming pools, light fittings, window and floor coverings (except tiles to WCs, bathrooms and laundries), letterboxes, fencing, security, vacuum systems, telephone, intercom and communication systems and air conditioning. Photographs shown in this brochure are indicative only to depict the style of Cavalier designs and may not be of this series design. Width and depth dimensions shown to floor plans are measured to external brick work and do not include eaves. Eaves are not included as standard. Additional costs apply.